

GULF COPPER SPECIALTY FABRICATION

FOR OVER 65 YEARS GULF COPPER AND MANUFACTURING CORPORATION HAS BEEN PROVIDING FABRICATION SERVICES TO THE OIL AND GAS MARKETS. THROUGH THE YEARS GULF COPPER FABRICATION HAS BECOME THE PREFERRED FABRICATOR BY CONSISTENTLY ADDING VALUE THROUGH OUR DEDICATION AND COMMITMENT TO OUR CORE VALUES.

- **SAFETY**
- **QUALITY**
- **DEPENDABILITY**
- **CAPACITY**
- **COST-EFFECTIVENESS**

EQUIPMENT & CAPABILITIES

- CNC Plate cutting- (4ea) 12' X 40' X 6" thickness
- 1000 & 400 TON plate press Break
- Plate roll up to 2-3/8" thick
- Programmable sawing up to 24"
- Pipe and Structural bending and forming
- Multi bank welding machines up to 600 Amps
- Multiple overhead cranes (30t comb. & 75t in high bay)
- Submerged arc welding
- Semi-Automated welding
- Hydrostatic testing up to 10,000 PSI
- Onsite blasting and coatings
- Open ended shop for extra-large projects
- Multiple yard cranes (300 Tons Combined)
- Material handling rail system
- Fully staffed machine shop
- > 80,000 ft² of Shop Fabrication Area

QUALITY ASSURANCE & CONTROL

- ASME "U" Code stamp
- NBBI "R" Stamp
- ABS Certified Cladding Facility
- ISO 9001:2008 certified
- > 400 Certified Welding Procedures
 - ASME
 - AWS
 - ABS
 - DNV
- Multi-Discipline of welding procedures
 - SMAW
 - GTAW
 - FCAW
 - SAW
- Staff CWI Weld Inspector
- Staff NACE Paint Inspector
- Staff Metallurgist

FACILITIES

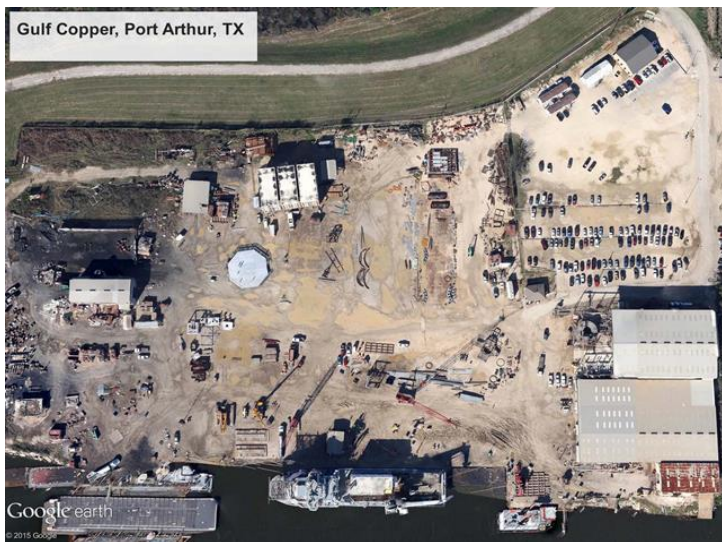
PORT ARTHUR, TEXAS



GALVESTON, TEXAS



Gulf Copper, Port Arthur, TX



Gulf Copper, Galveston, TX



STRUCTURAL STEEL FABRICATION



PIPE FABRICATION



ASME PRESSURE VESSEL FABRICATION



MODULE/SKID FABRICATION





MISC. STEEL FABRICATION

